
5 Disassembly and Reassembly

This section of the service manual describes the disassembly and reassembly procedures for the SyncMaster 33*TFT/53*TFT monitors.

WARNING: This monitor contains electrostatically sensitive devices. Use caution when handling these components.

5-1 Disassembly

- Cautions:**
1. Disconnect the monitor from the power source before disassembly.
 2. Follow these directions carefully; never use metal instruments to pry apart the cabinet.

5-1-1 Removing the Stand

1. Carefully push the edge of the hinge cap with a 000 screw driver until the opposite end of the hinge cap releases.



Figure 5-1

2. Remove 4 screws in the hinge area.



Figure 5-2

3. Push the stand to the left side to release the hinge.
Caution: Be careful. Signal cable and power cable are still attached to the monitor.
4. Lift the stand away from the monitor until Vesa Cover is completely visible. And pry it off the back of the monitor.

5. Disconnect Power Cord and Signal Cable.



Figure 5-3

5-1-2 Main Body Disassembly

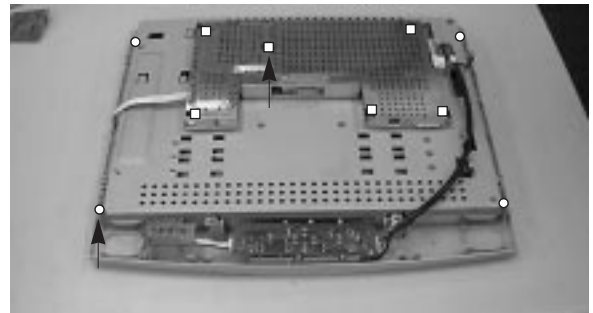


Figure 5-4

1. Remove the 4 screws on the Rear Cover. (Marked: ○)
2. Remove Rear Cover from the Front Cover.
3. Remove 6 screws on the Shield. (Marked: □)
4. Disconnect Inverter wire, Function PCB wire and Interface wire.
5. Remove the Main PCB Assembly.

5 Disassembly and Reassembly

6. Remove 4 screws on the Rear Panel Bracket.
(150 : 6 screws)

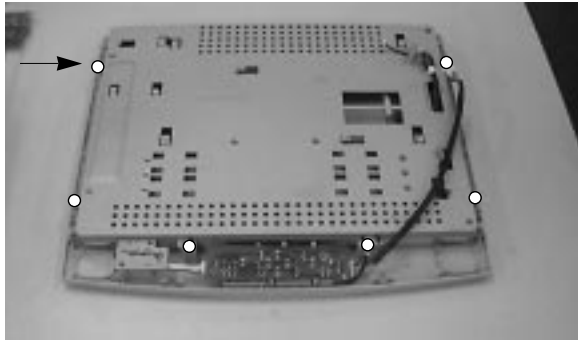


Figure 5-5

7. Remove the Bracket Assembly from the Front Cover.
8. Remove 1 screw on the Power PCB.
9. Remove Function PCB from locking area of Function Knob.



Figure 5-6

10. Remove 4 screws on the Shield of Panel.
11. Remove the Shield.
12. Disconnect the jack between Panel and Inverter PCB.
13. Remove Rear Bracket.

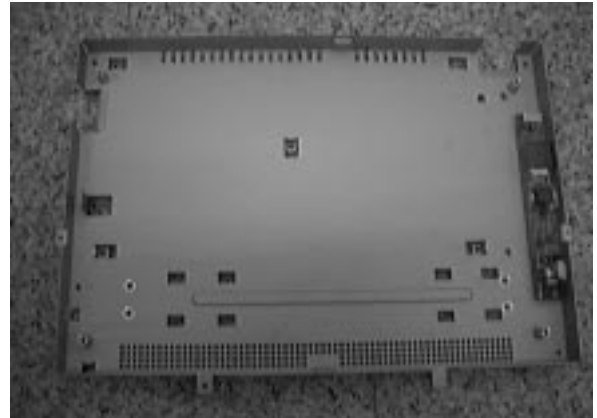


Figure 5-7

14. Remove 2 screws between Rear Bracket and Inverter PCB.
15. Remove the Interface wire on the Rear Side of Panel.

5-1-3 Stand Disassembly

1. Stand the stand assembly with the base close to you.



Figure 5-8

2. Make a little gap between stand assembly and Rear Cover with a 000 screw driver. And pry Rear Cover off stand assembly with the finger.



Figure 5-9

3. Remove the 10 screws from the stand assembly.

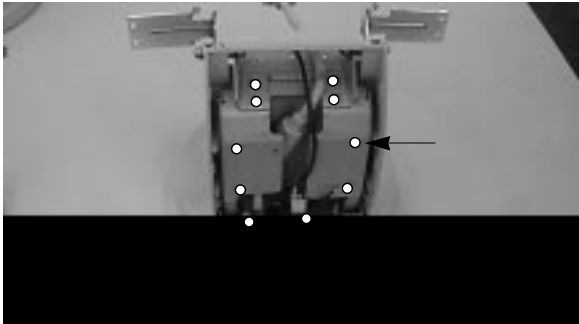


Figure 5-10

4. Remove the hinge, neck front, PCB, signal cable.

5. Remove the screw and washer on the base of the stand.

Figure 5-11

6. Remove the Stand Base and Stand Top.

5-2 Replacement Order of Lamp Assemblies (13.3")

1. Disconnect lamp lead-connector from the inverter.

* Replacement of lamp assemblies should be done at the power off state and recommended clean bench condition.

2. Remove a screw which is used to hold a lamp assembly on.

3. Replace lamp assemblies.
4. Assemble new lamp assembly according to the counter order.

5-3 Replacement Order of Lamp Assemblies (15")

1. Disconnect lamp lead-connectors from the inverter.
(2EA)

* Replacement of lamp assemblies should be done at the power off state and recommended clean bench condition.

2. Remove 2 screws which are used to hold the lamp assemblies on.

3. Replace 2 lamp assemblies.
4. Assemble new lamp assemblies according to the counter order.

5-4 Reassembly

Reassembly procedures are in the reverse order of Disassembly procedures.