

Color Television

CHSSIS	MODEL
CN-402FN	DTQ-20S1SSFV DTQ-2130SSFV DTQ-21D7SSPV DTQ-21U6SSFV DTQ-21U6SSV

Caution

: In this Manual, some parts can be changed for improving. their performance without notice in the parts list. So, if you need the latest parts information, please refer to PPL(Parts Price List)in Service Information Center.

ALIGNMENT INSTRUCTION

1. SERVICE MODE ADJUSTMENTS

Follow the steps below whenever service adjustment is required.

See Table- A and Table- B to determine if service adjustments are required.

1) How to enter the service mode using the user remote control.

- Turn the set on.
- Direct the remote control to the reception window of TV.
- Push buttons of remote control in sequence as follows.

1 MUTE DISPLAY MUTE

- Then, the screen will appear as follows.

SERVICE 02
SERVICE 03
SERVICE 04
SERVICE 05
SERVICE 06
SERVICE 07
SERVICE 08
SERVICE 09
SERVICE 10
SERVICE 11
SERVICE 12
SELECT ADJUST EXIT

- Using the channel up or channel down button, select the item you wish to adjust.
(The color of selected item turns into the blue.)
- Press the volume up or down button to enter in the service mode you wish to adjust.

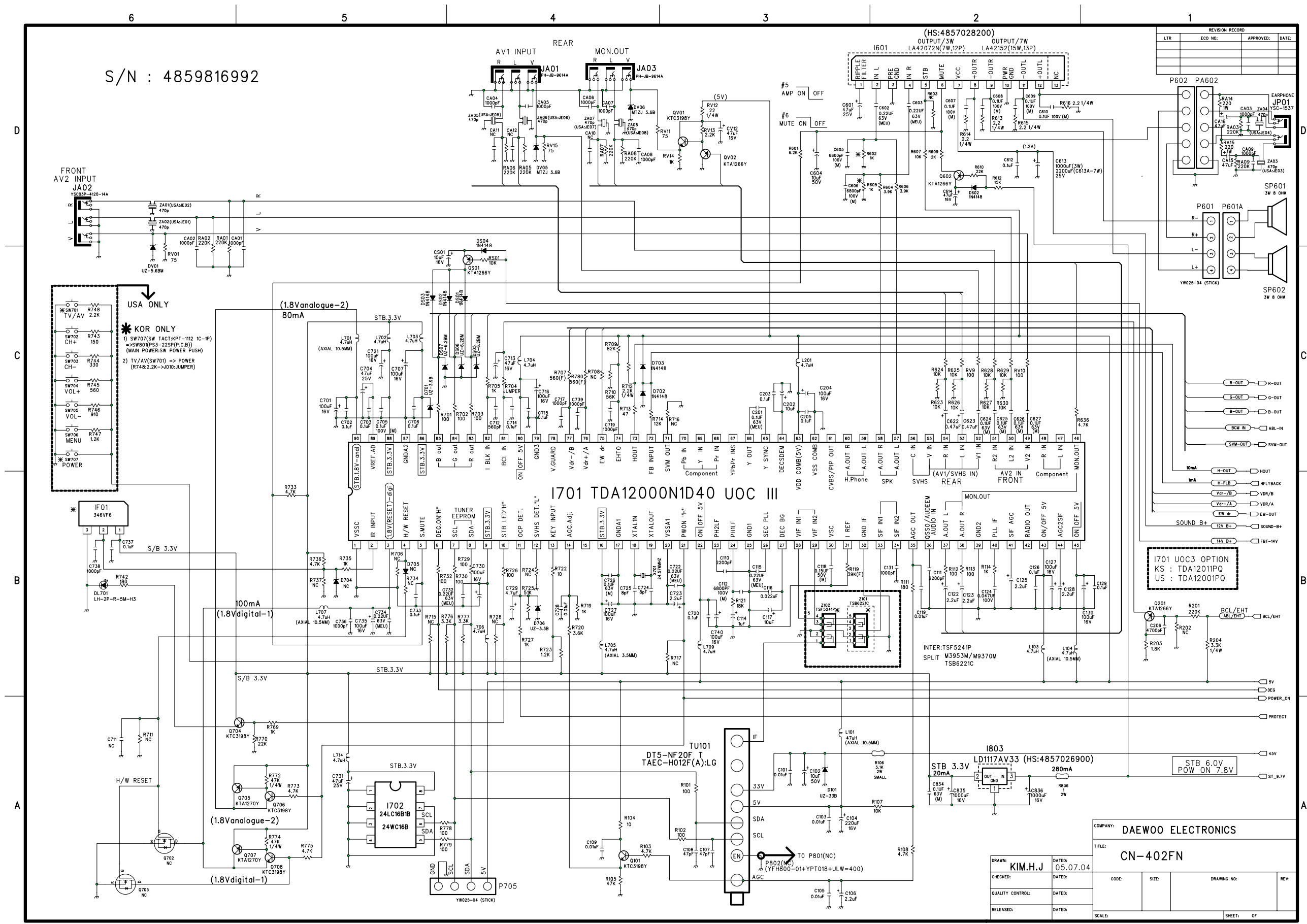
2) How to memorize the adjusted values in the service mode.

- Don't have to press any button the state which the screen is displaying each of service menus after all adjustments are completed each of all service menu.

Table-A : Adjust the values of service mode when a part is replaced.

PART REPLACED	ADJUSTMENT		NOTES
	NECESSARY	UNNECESSARY	
I701 (U-COM)		O	Data is stored in I702.
I702 (EEPROM)	O		Initial setting values are written from I701. ADJUSTING ITEMS S6 : Geometry adjustmrnt S8 : White balance S9 : Subbrightness
CRT	O		Adjust items related to picture tube only. (White Balance adjustment) CRT OPTION (Screen Option adjustment)

SCHEMATIC DIAGRAM



SCHEMATIC DIAGRAM

