

BLAUPUNKT AUTORADIO

Bosch Telecom

Verona CR 31

7 641 770 013

ESSEN CR 31

7 641 771 010

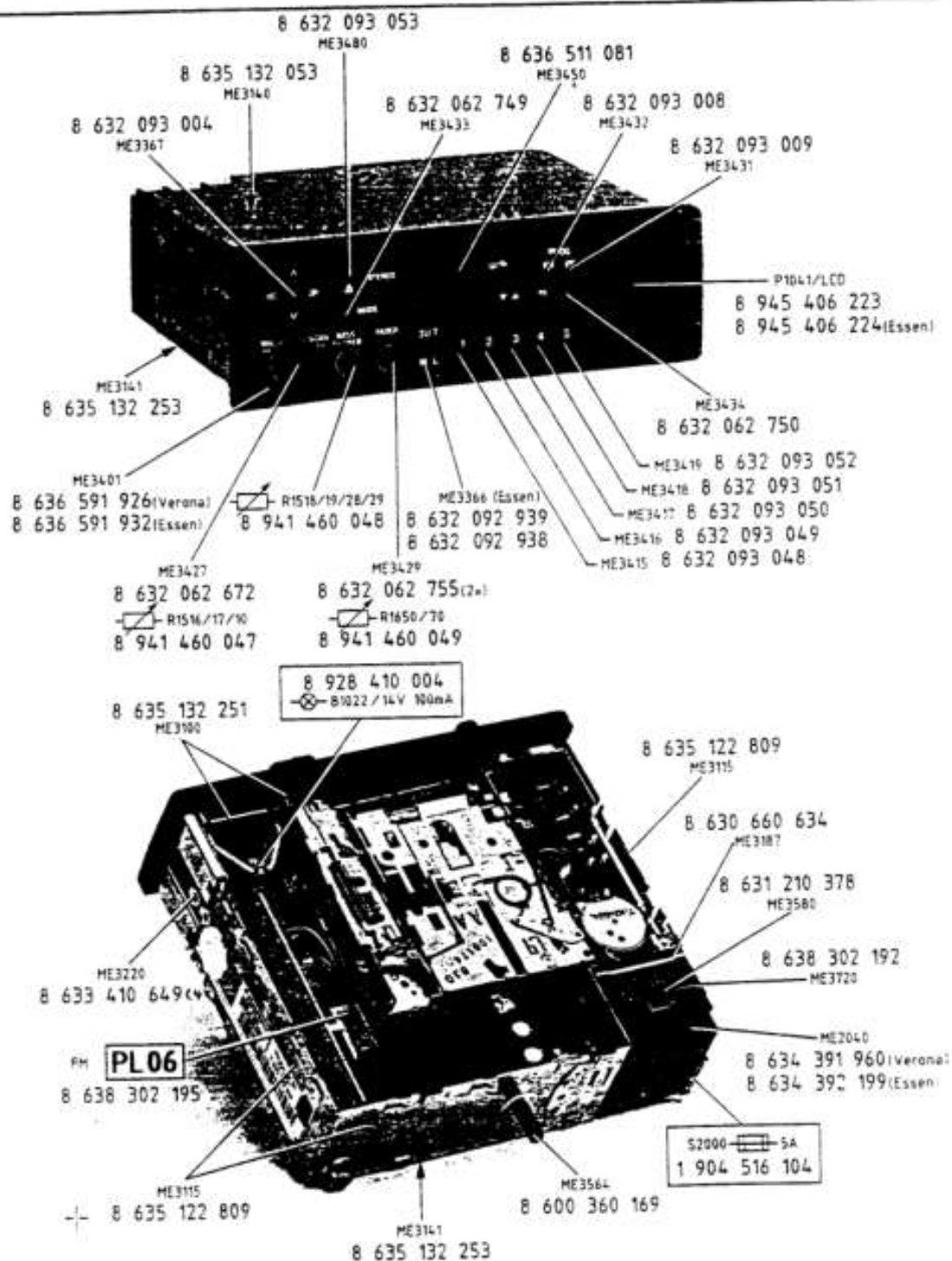
3 D91 240 005 My 05 91



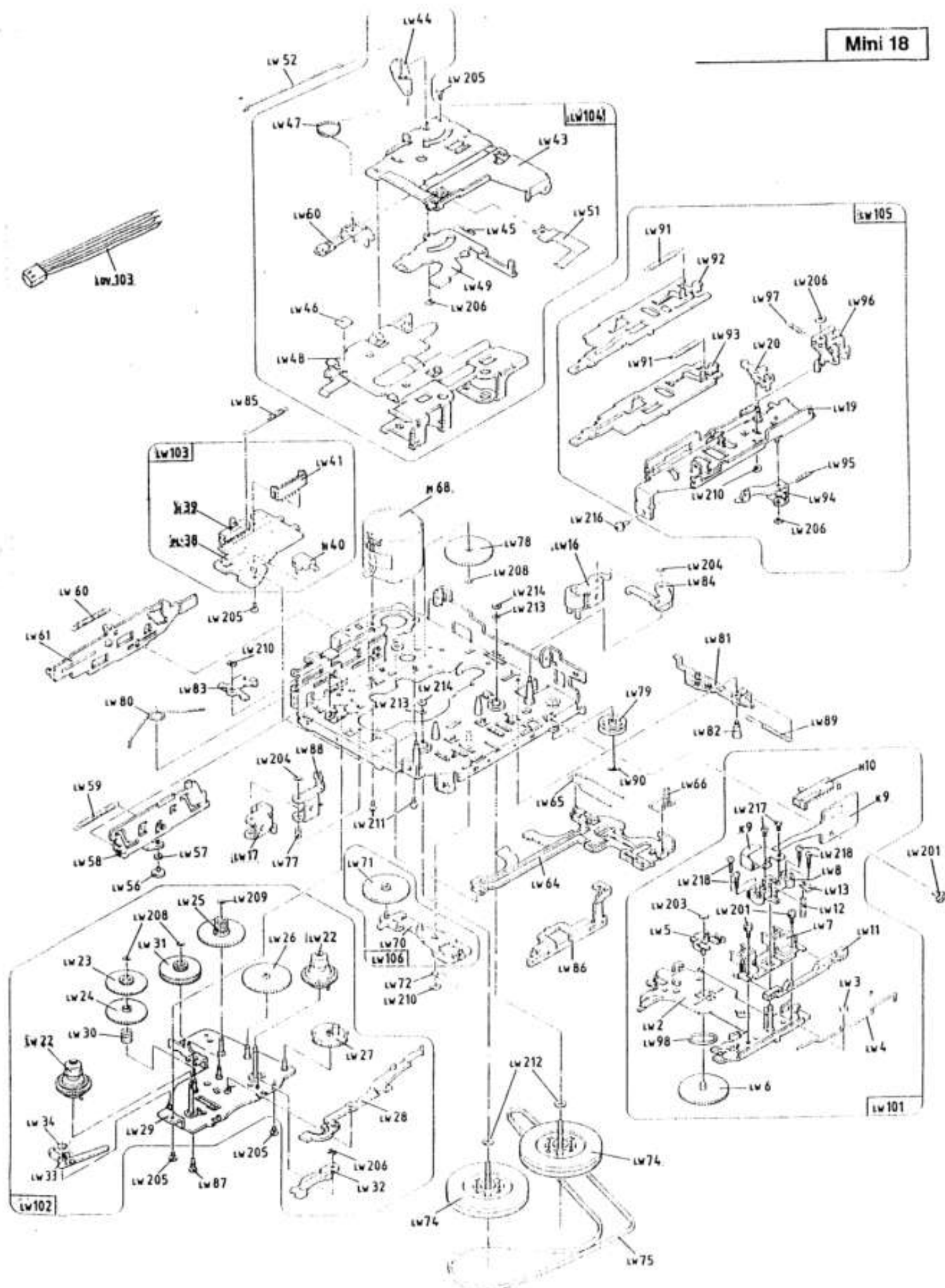
Ersatzteilliste

Spare Parts List
Liste de rechanges
Lista de repuestos

Mini 18

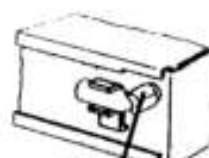


| | Cassettenlaufwerk Mini 18 | Cassette mechanism | Mécanisme cassette | Mecanismo de caseta | 8 638 811 610 |
|-------|------------------------------|--------------------|-------------------------|-----------------------|---------------|
| LW2 | Trägerplatte | Carrying plate | Plateau support | Placa portadora | 8 628 800 426 |
| LW3 | Rolle | Roller | Rouleau | Rodillo | 8 626 600 475 |
| LW4 | Haltefeder | Holding spring | Ressort de maintien | Muelle de sujeción | 8 621 200 115 |
| LW5 | Hebel | Lever | Levier | Palanca | 8 621 901 689 |
| LW6 | Zahnrad | Toothed gear | Roue dentée | Rueda de engranaje | 8 626 600 468 |
| LW7 | Bandführung | Tape guide | Guide ruban | Guia de cinta | 8 621 901 690 |
| LW8 | Tonkopfträger | Sound head carrier | Support tête sonore | Portacabeza sonora | 8 621 300 145 |
| LW11 | Schieber | Pusher | Curseur coulisseau | Corredera | 8 621 901 691 |
| LW12 | Druckfeder | Pressure spring | Ressort pression | Muelle de compresión | 8 621 200 116 |
| LW13 | Sicherungsscheibe | Locking washer | Anneau d'arrêt | Arandela de seguridad | 8 620 105 426 |
| LW14 | Druckwinkel | Pressure angle | Equerre appliquée | Angulo de presión | 8 621 901 692 |
| LW15 | Druckwinkel | Pressure angle | Equerre appliquée | Angulo de presión | 8 621 901 693 |
| LW19 | Schieber | Pusher | Curseur coulisseau | Corredera | 8 621 901 694 |
| LW20 | Hebel | Lever | Levier | Palanca | 8 621 901 688 |
| LW22 | Wickelfeder | Clutch | Embrayage | Embrague | 8 626 600 469 |
| LW23 | Zwischenrad | Interm. wheel | Roue intermédiaire | Rueda intermedia | 8 626 600 470 |
| LW24 | Zwischenrad | Interm. wheel | Roue intermédiaire | Rueda intermedia | 8 626 600 471 |
| LW25 | Zwischenrad | Interm. wheel | Roue intermédiaire | Rueda intermedia | 8 626 600 472 |
| LW26 | Zahnrad | Toothed gear | Roue dentée | Rueda de engranaje | 8 626 600 473 |
| LW27 | Schaltzahnrad | Switch wheel | Roue de commutat. | Rueda de comutación | 8 626 600 474 |
| LW28 | Hebel | Lever | Levier | Palanca | 8 621 901 687 |
| LW29 | Trägerplatte | Carrying plate | Plateau support | Placa portadora | 8 628 800 146 |
| LW30 | Druckfeder | Pressure spring | Ressort pression | Muelle de compresión | 8 621 200 117 |
| LW31 | Kupplung | Clutch | Accouplement | Acoplamiento | 8 626 200 476 |
| LW32 | Hebel | Lever | Levier | Palanca | 8 621 901 695 |
| LW33 | Sperrhebel | Locking lever | Levier de verrouillage | Palanca de bloqueo | 8 621 901 685 |
| LW34 | Torsionsfeder | Spring | Ressort | Resorte | 8 621 200 118 |
| LW41 | Steckerwanne | Plug hull | Cuvette de fiche | Cubeta de enchufes | 8 622 002 000 |
| LW43 | Cassettenheber | Lever | Levier | Palanca | 8 621 300 147 |
| LW44 | Hebel | Lever | Levier | Palanca | 8 621 901 608 |
| LW45 | Zugfeder | Extension spring | Ressort de traction | Muelle de tracción | 8 624 600 675 |
| LW46 | Gummipuffer | Rubber buffer | Tampon en caoutchouc | Tope de tracción | 8 622 306 053 |
| LW47 | Torsionsfeder | Spring | Ressort | Resorte | 8 621 200 119 |
| LW48 | Cassettenführung | Cassette guide | Guide de cassette | Guia casete | 8 621 300 148 |
| LW49 | Schieber | Pusher | Curseur coulisseau | Corredera | 8 621 300 149 |
| LW50 | Schieber | Pusher | Curseur coulisseau | Corredera | 8 621 901 696 |
| LW51 | Feder | Spring | Ressort | Resorte | 8 624 600 673 |
| LW52 | Feder | Spring | Ressort | Resorte | 8 624 600 673 |
| LW56 | Rolle | Roller | Rouleau | Rodillo | 8 626 600 477 |
| LW57 | Rolle | Roller | Rouleau | Rodillo | 8 626 600 478 |
| LW58 | Schieber | Pusher | Curseur coulisseau | Corredera | 8 621 300 150 |
| LW59 | Zugfeder | Extension spring | Ressort de traction | Muelle de tracción | 8 621 200 121 |
| LW60 | Zugfeder | Extension spring | Ressort de traction | Muelle de tracción | 8 621 200 122 |
| LW61 | Winkel | Angle | Equerre | Pieza angular | 8 621 901 697 |
| LW64 | Schieber | Pusher | Curseur coulisseau | Corredera | 8 621 300 151 |
| LW65 | Haltefeder | Holding spring | Ressort de maintien | Muelle de sujeción | 8 621 200 123 |
| LW66 | Haltefeder | Holding spring | Ressort de maintien | Muelle de sujeción | 8 621 200 124 |
| LW70 | Steuerplatte | Distribution plate | Platine de commande | Placa de distribución | 8 621 300 154 |
| LW71 | Zahnrad | Toothed gear | Roue dentée | Rueda de engranaje | 8 626 600 461 |
| LW72 | Torsionsfeder | Spring | Ressort | Resorte | 8 621 200 125 |
| LW74 | Schwungrad | Flywheel | Disque d'équilibre | Disco volante | 8 626 600 462 |
| LW75 | Antriebsriemen | Drive belt | Courroie d'entraînement | Correa motriz | 8 624 700 416 |
| LW77 | Druckfeder | Pressure spring | Ressort pression | Muelle de compresión | 8 624 600 800 |
| LW78 | Zahnrad | Toothed gear | Roue dentée | Rueda de engranaje | 8 626 600 463 |
| LW79 | Riemenscheibe | Pulley | Poulie | Polea | 8 626 600 464 |
| LW80 | Torsionsfeder | Spring | Ressort | Resorte | 8 621 200 126 |
| LW81 | Hebel | Lever | Levier | Palanca | 8 621 901 704 |
| LW82 | Schraubbolzen | Screw | Vis | Tornillo | 8 623 400 199 |
| LW83 | Hebel | Lever | Levier | Palanca | 8 621 901 703 |
| LW84 | Hebel | Lever | Levier | Palanca | 8 621 901 702 |
| LW85 | Zugfeder | Extension spring | Ressort de traction | Muelle de tracción | 8 621 200 127 |
| LW86 | Winkel | Angle | Equerre | Pieza angular | 8 621 901 701 |
| LW87 | Schraube | Screw | Vis | Tornillo | 8 623 400 210 |
| LW88 | Hebel | Lever | Levier | Palanca | 8 621 901 700 |
| LW89 | Zugfeder | Extension spring | Ressort de traction | Muelle de tracción | 8 621 600 128 |
| LW90 | Sicherungsscheibe | Locking washer | Anneau d'arrêt | Arandela de seguridad | 8 620 105 427 |
| LW91 | Zugfeder | Extension spring | Ressort de traction | Muelle de tracción | 8 621 200 129 |
| LW92 | Schieber | Pusher | Curseur coulisseau | Corredera | 8 621 901 698 |
| LW93 | Schieber | Pusher | Curseur coulisseau | Corredera | 8 621 901 699 |
| LW94 | Hebel | Lever | Levier | Palanca | 8 621 300 152 |
| LW95 | Zugfeder | Extension spring | Ressort de traction | Muelle de tracción | 8 621 200 130 |
| LW96 | Halter | Support | Support | Soporte | 8 621 300 153 |
| LW97 | Zugfeder | Extension spring | Ressort de traction | Muelle de tracción | 8 621 200 131 |
| LW98 | Ring | Ring | Anneau | Aro | 8 620 105 428 |
| LW101 | Tonkopfträger | Sound head carrier | Support tête sonore | Portacabeza sonora | 8 628 800 429 |
| LW102 | Getriebeeinheit | Cogwheel assembly | Ensemble roue dentée | Rueda dentada compi | 8 628 800 420 |
| LW103 | Schaltereinheit | Switch unit | Unité commutateur | Unidad de interrup. | 8 628 800 421 |
| LW104 | Cassettenführung | Cassette guide | Guide de cassette | Guia casete | 8 628 800 422 |
| LW105 | Hebel | Lever | Levier | Palanca | 8 628 800 423 |
| LW106 | Hebel | Lever | Levier | Palanca | 8 628 800 424 |



<

Nota:
No se indican en la lista de piezas de reemplazo los condensadores y resistores de uso comercial. Les rogamos comprar esas piezas en el comercio especializado.



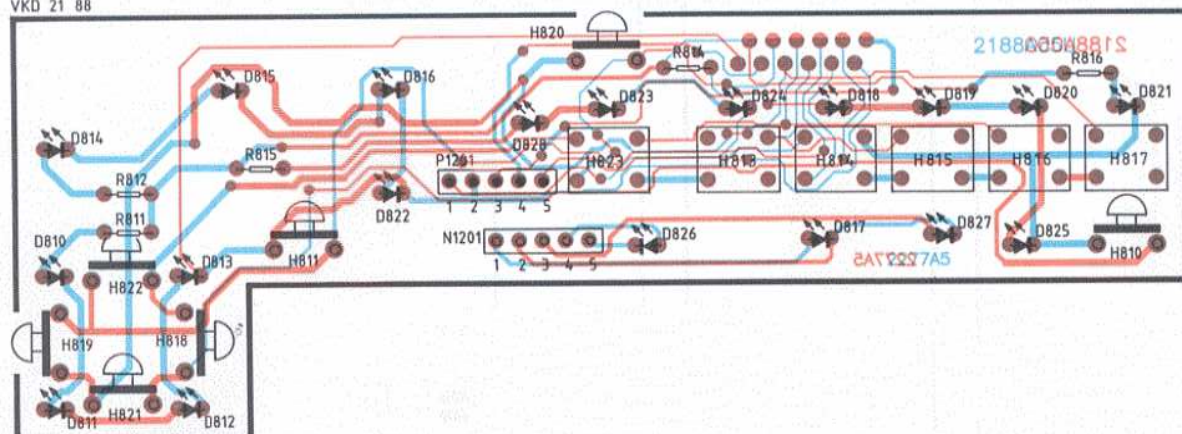
8 908 603 224
8 908 110 003
(Quick cut)

Mini 18

| | | | | | |
|--------|--------------------|--------------------|-----------------------|-----------------------|---------------|
| DV37 | Kabel | Cable | Câble | Cable | 8 624 400 253 |
| K8 | Tonkopf | Sound head | Tête sonore | Cabeza sonora | 8 627 609 509 |
| H10 | Schiebeschalter | Slide switch | Commut. à curseur | Comutador desliza | 8 908 003 512 |
| BL3 | Schalterplatte | Switch plate | Plaque d'interruption | Placa de interrupt. | 8 628 309 761 |
| H2 | Schiebeschalter | Slide switch | Commut. à curseur | Comutador desliza | 8 908 003 513 |
| FA1 | Testschalter | Non-locking switch | Interr. à touche | Interruptor sensit. | 8 908 003 514 |
| M68 | Motor | Motor | Moteur | Motor | 8 627 205 766 |
| LW201 | Schraube | Screw | Vis | Tornillo | 8 623 400 211 |
| LW203 | Sicherungsscheibe | Locking washer | Anneau d'arrêt | Arandela de seguridad | 8 620 105 429 |
| LW204 | Sicherungsscheibe | Locking washer | Anneau d'arrêt | Arandela de seguridad | 8 620 105 430 |
| LW205 | Schraube | Screw | Vis | Tornillo | 8 623 400 216 |
| LW206 | Sicherungsring | Retainer | Anneau d'arrêt | Anillo de seguridad | 8 620 105 436 |
| LW208 | Sicherungsscheibe | Locking washer | Anneau d'arrêt | Arandela de seguridad | 8 620 105 431 |
| LW209 | Sicherungsscheibe | Locking washer | Anneau d'arrêt | Arandela de seguridad | 8 620 105 432 |
| LW210 | Sicherungsring | Retainer | Anneau d'arrêt | Anillo de seguridad | 8 620 105 437 |
| LW211 | Schraube | Screw | Vis | Tornillo | 8 623 400 215 |
| LW212 | Sicherungsscheibe | Locking washer | Anneau d'arrêt | Arandela de seguridad | 8 620 105 433 |
| LW213 | Sicherungsscheibe | Locking washer | Anneau d'arrêt | Arandela de seguridad | 8 620 105 434 |
| LW214 | Sicherungsscheibe | Locking washer | Anneau d'arrêt | Arandela de seguridad | 8 620 105 435 |
| LW216 | Schraube | Screw | Vis | Tornillo | 8 623 400 212 |
| LW217 | Schraube | Screw | Vis | Tornillo | 8 623 400 213 |
| LW218 | Justierschraube | Screw | Vis | Tornillo | 8 623 400 214 |
| LW3240 | Schraube (4x Torx) | Screw | Vis | Tornillo | 8 633 410 751 |

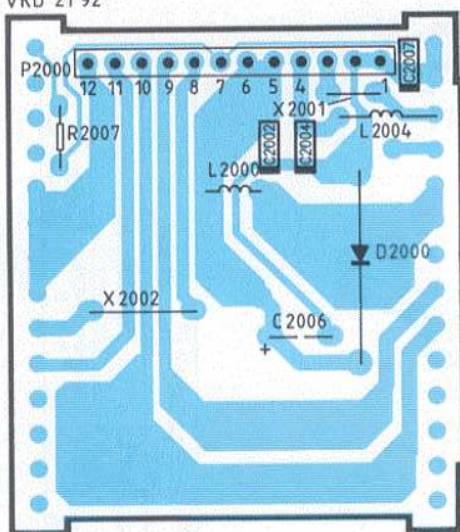
PL 47

VKD 21 88



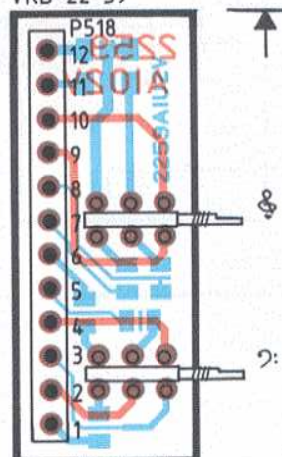
PL 74/1 + CHIP

VKD 21 92



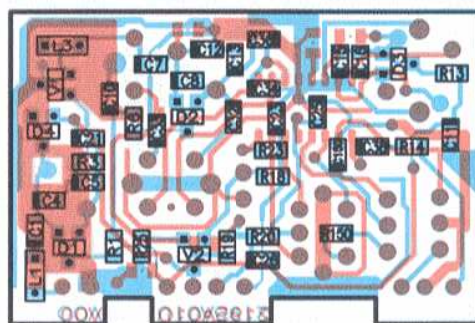
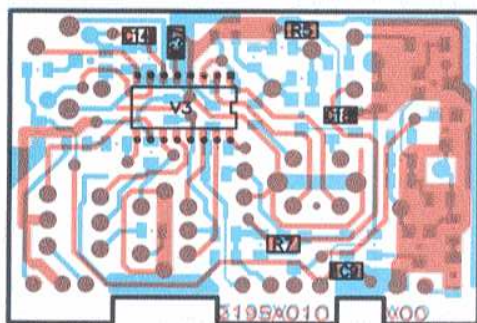
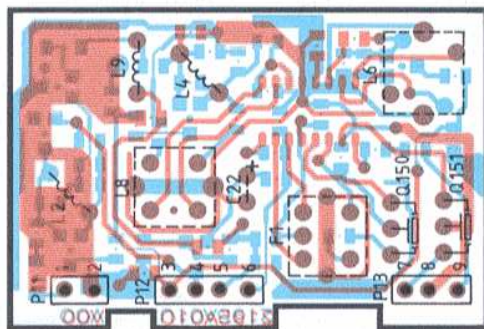
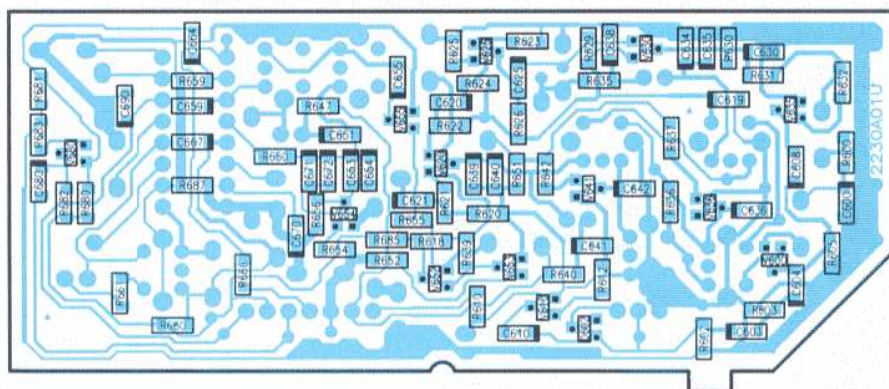
PL 12 CHIP

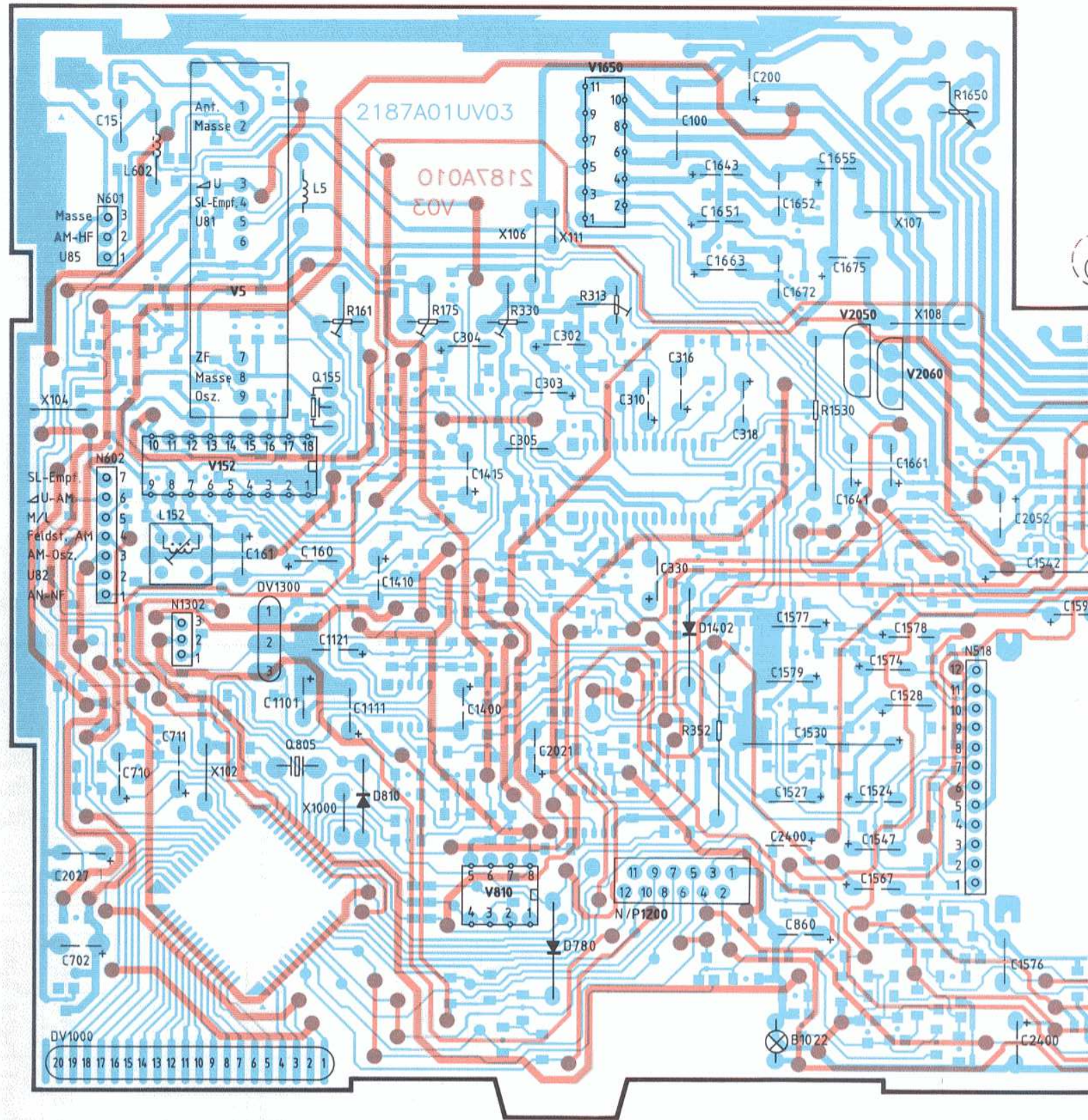
VKD 22 59

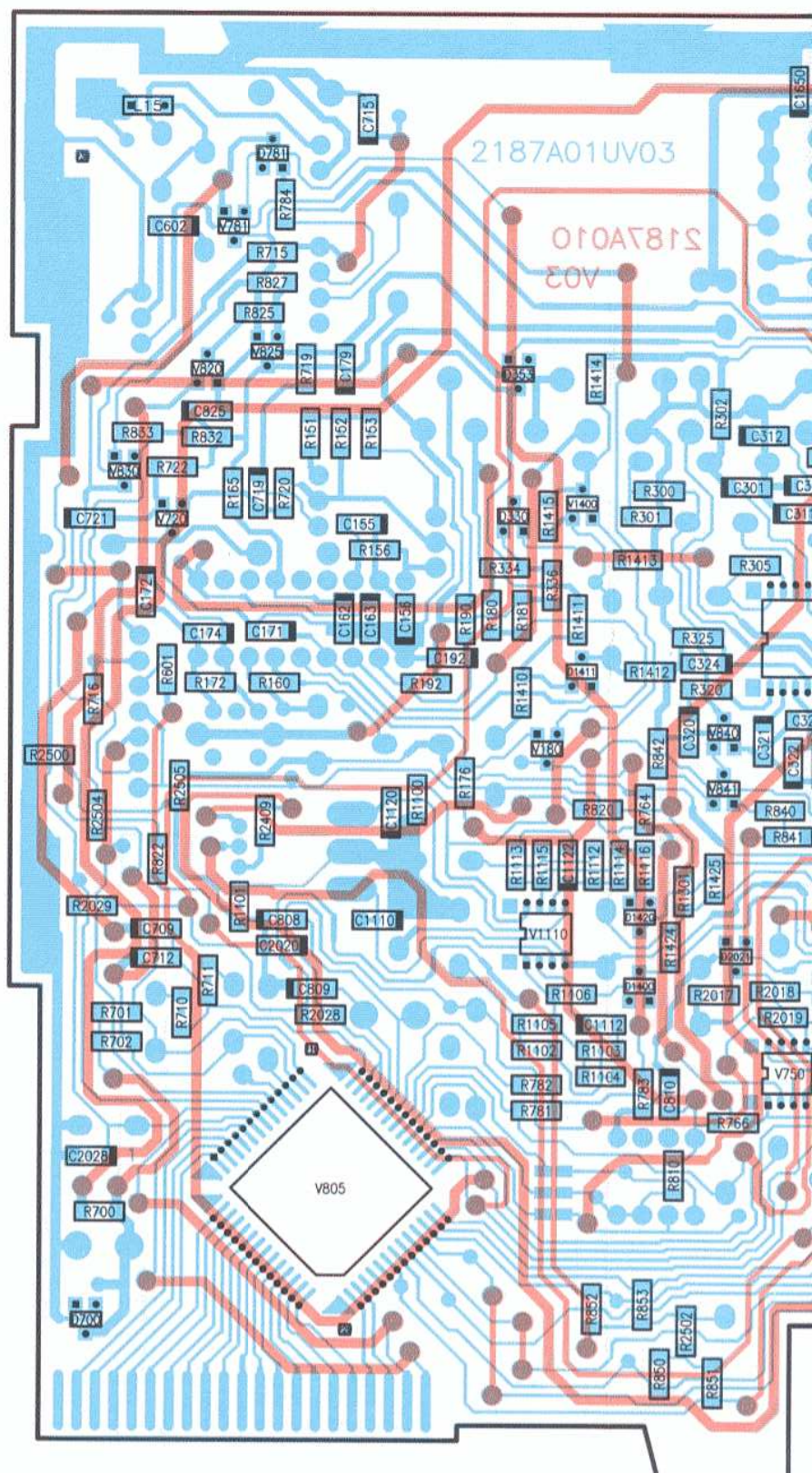
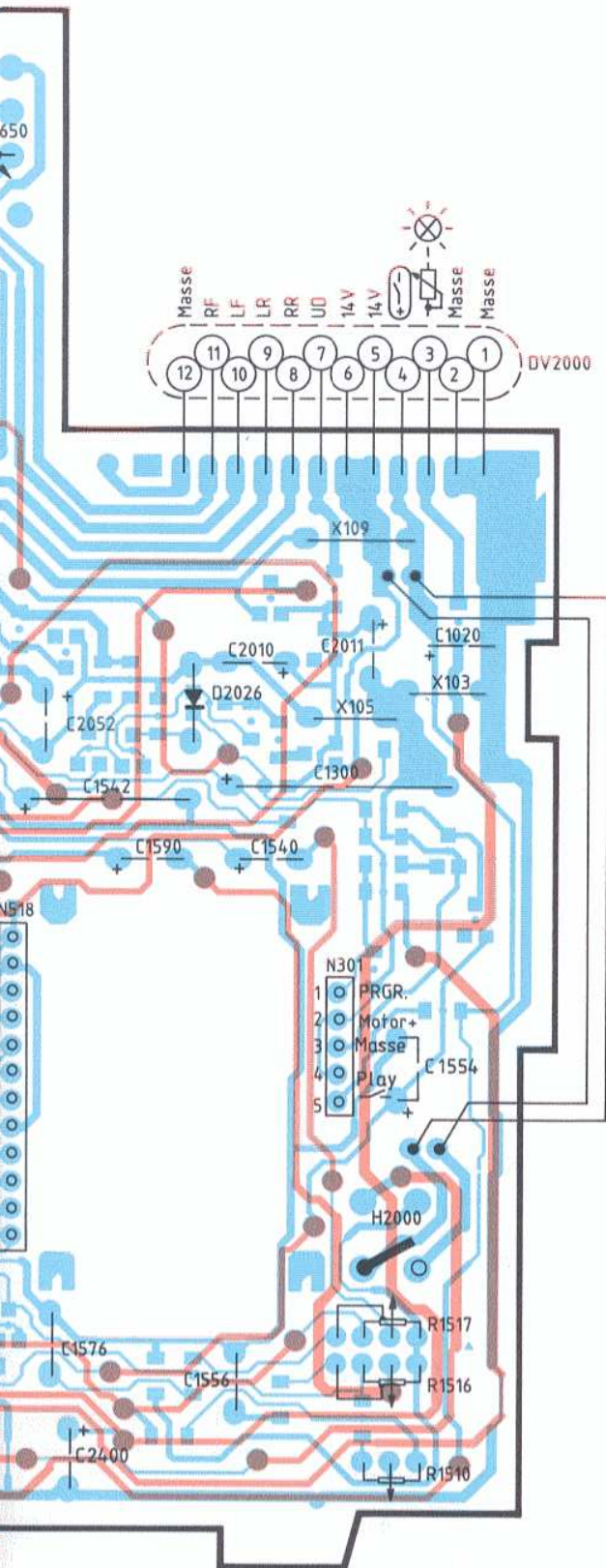


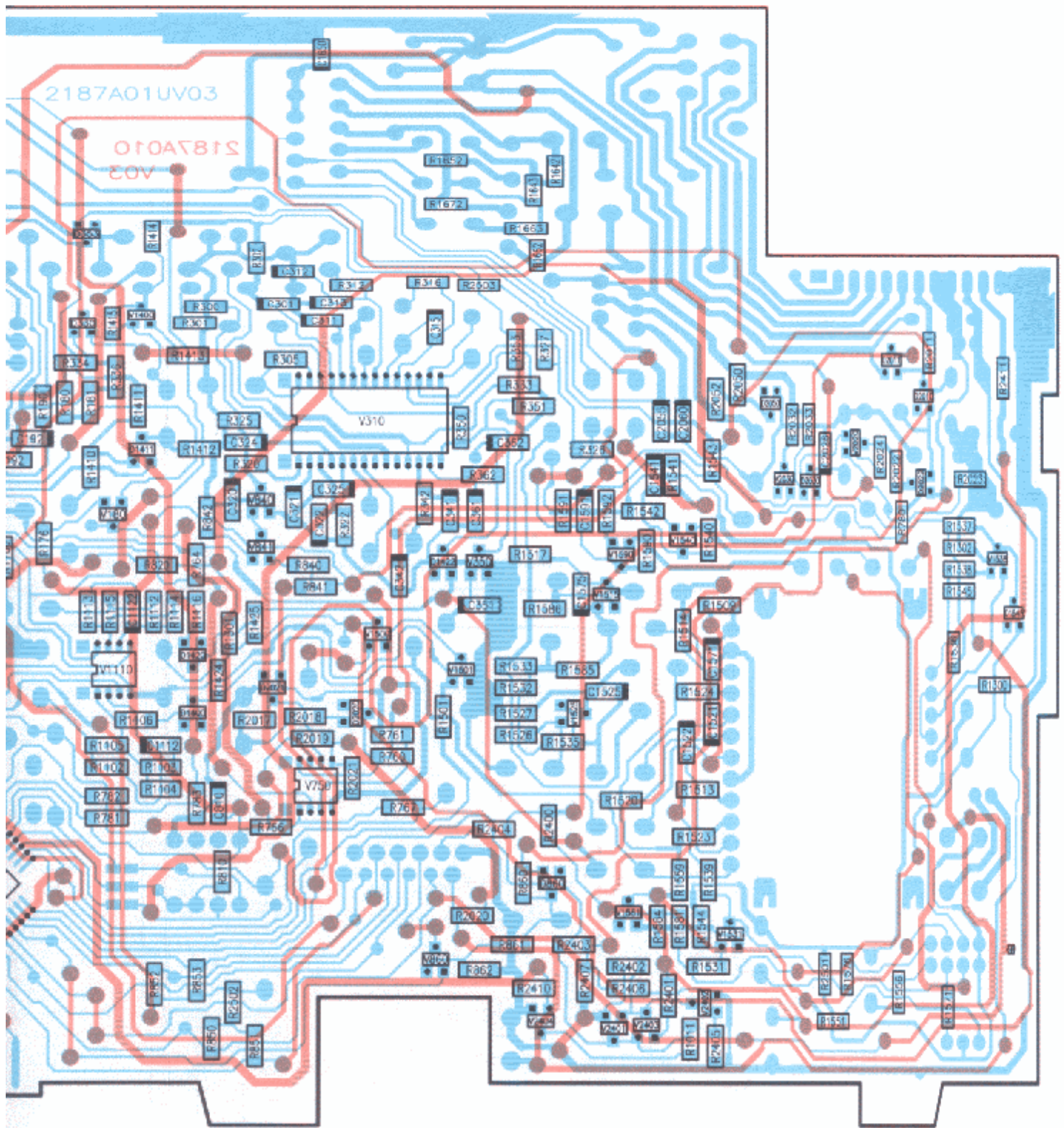
VKD 22 59

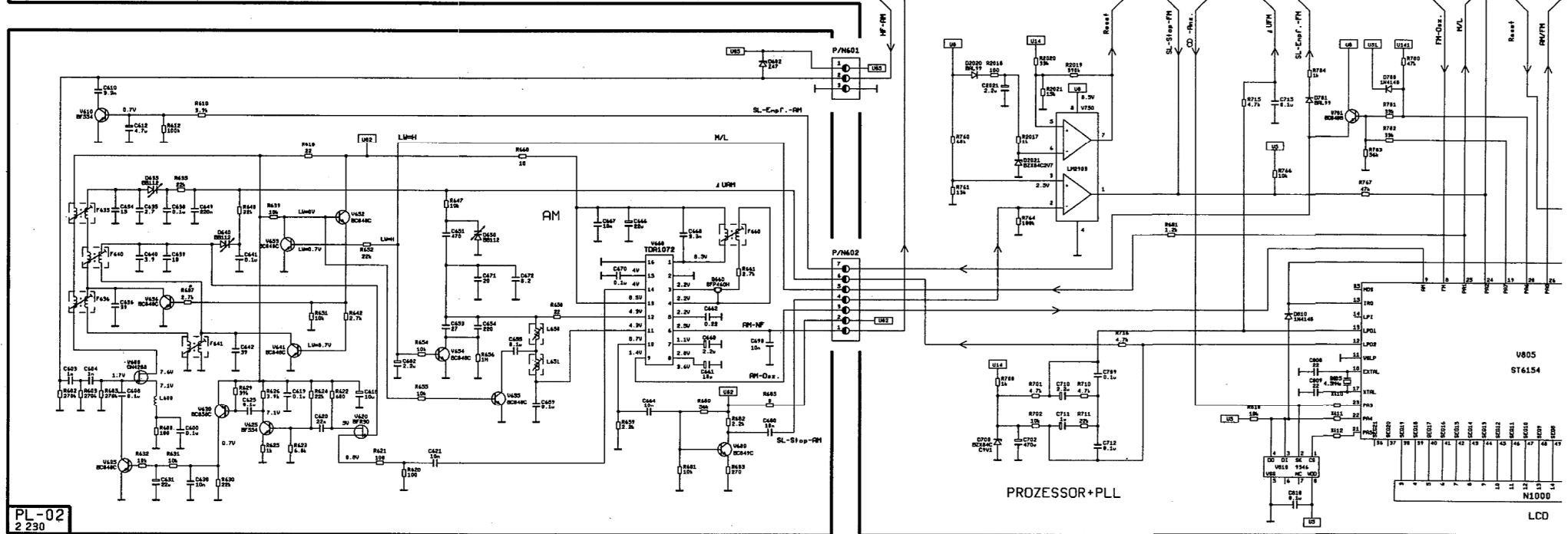
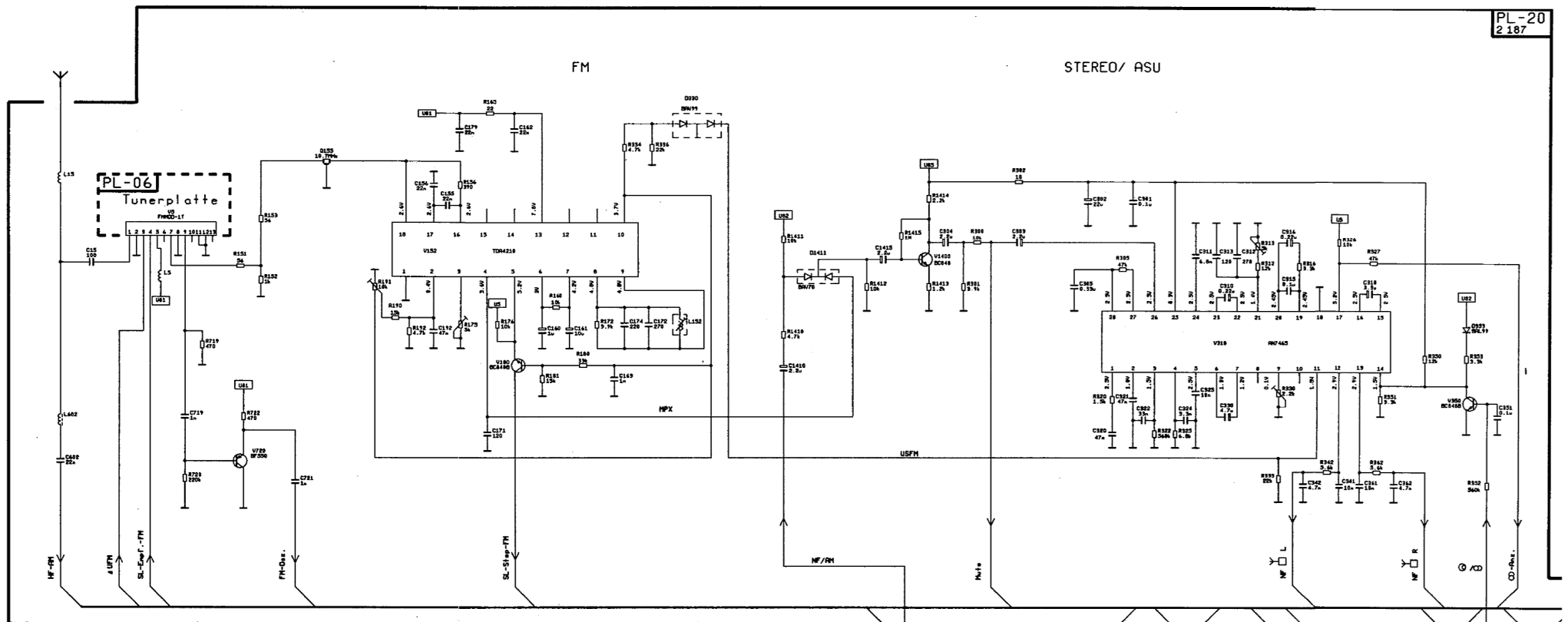




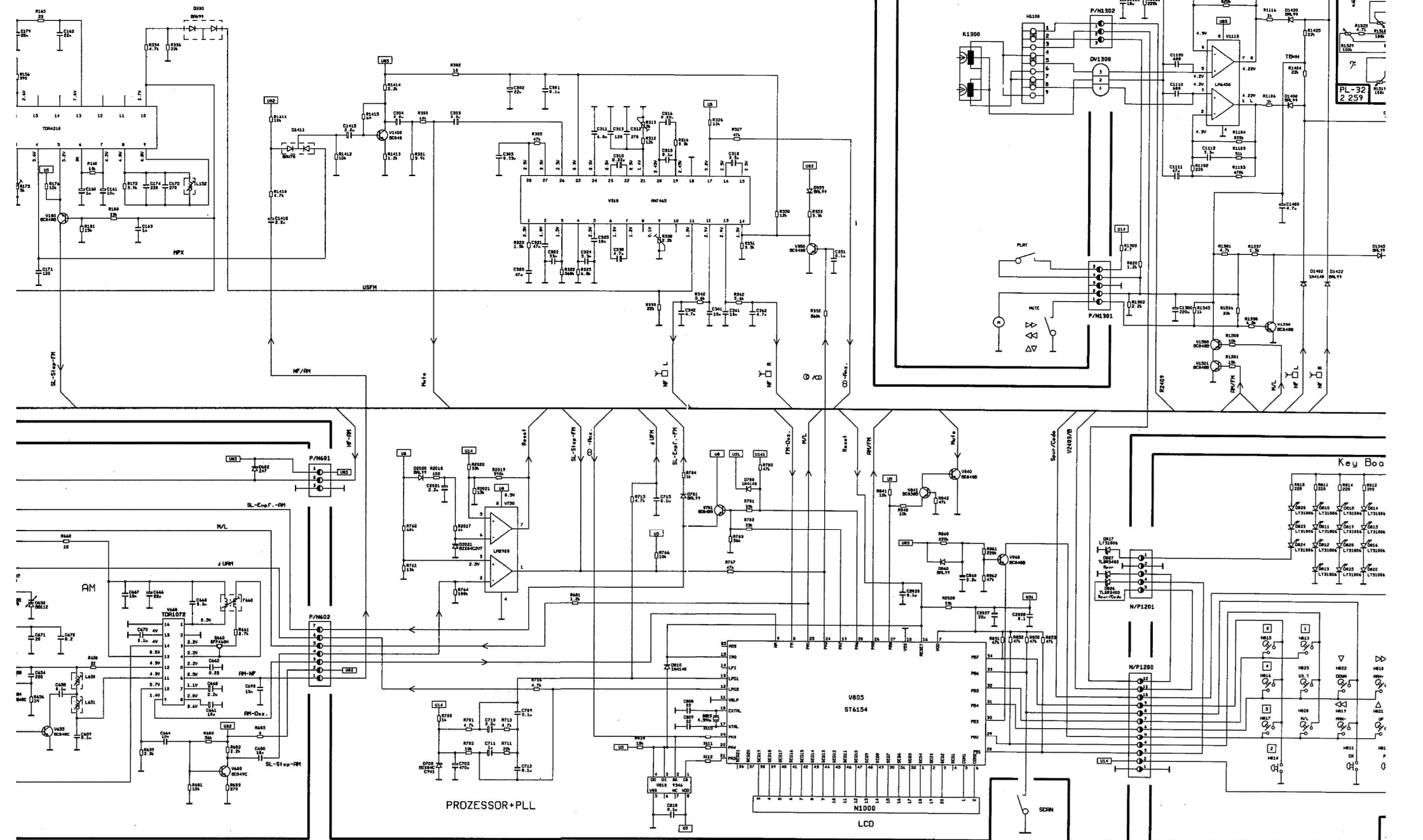


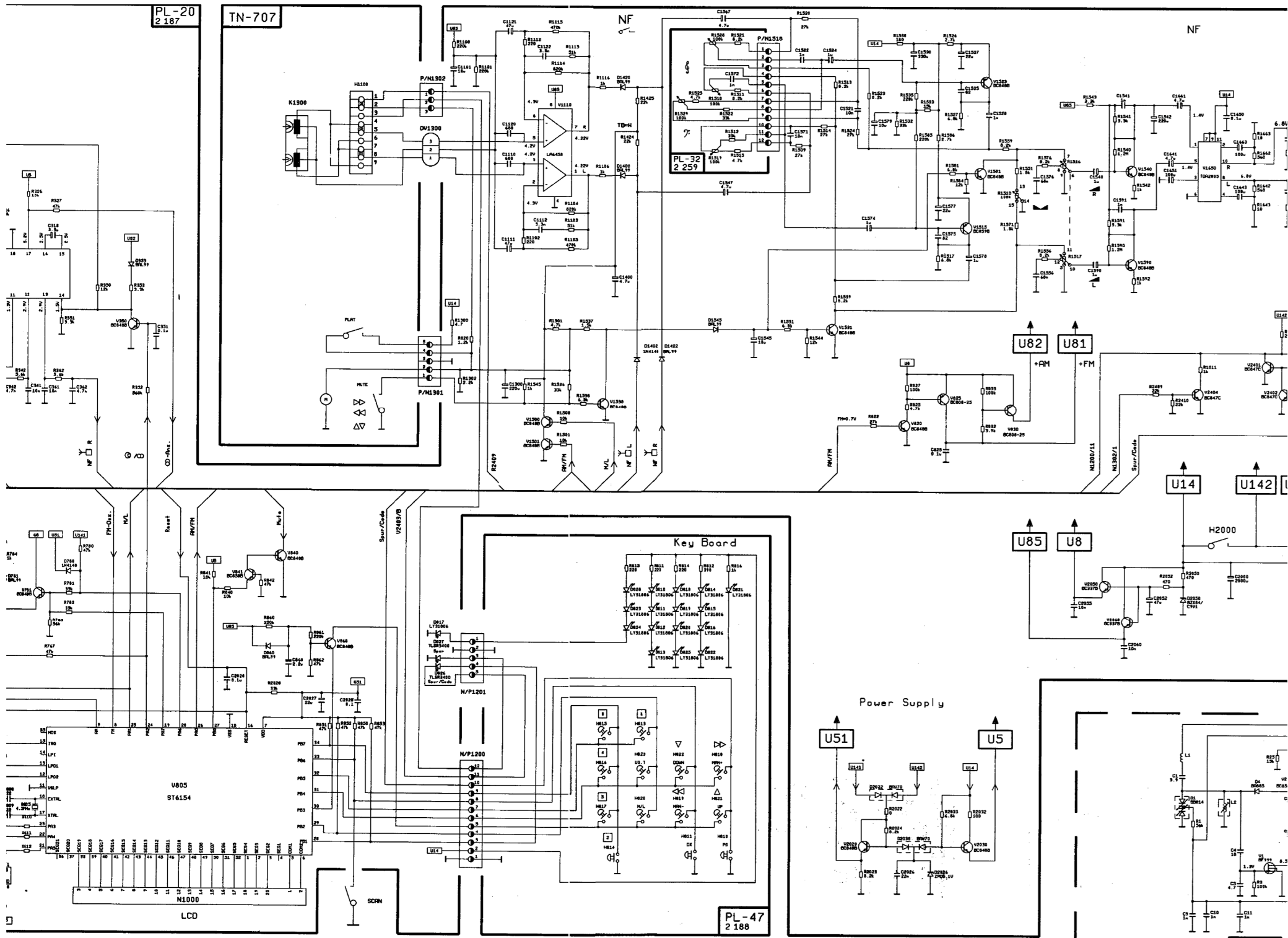


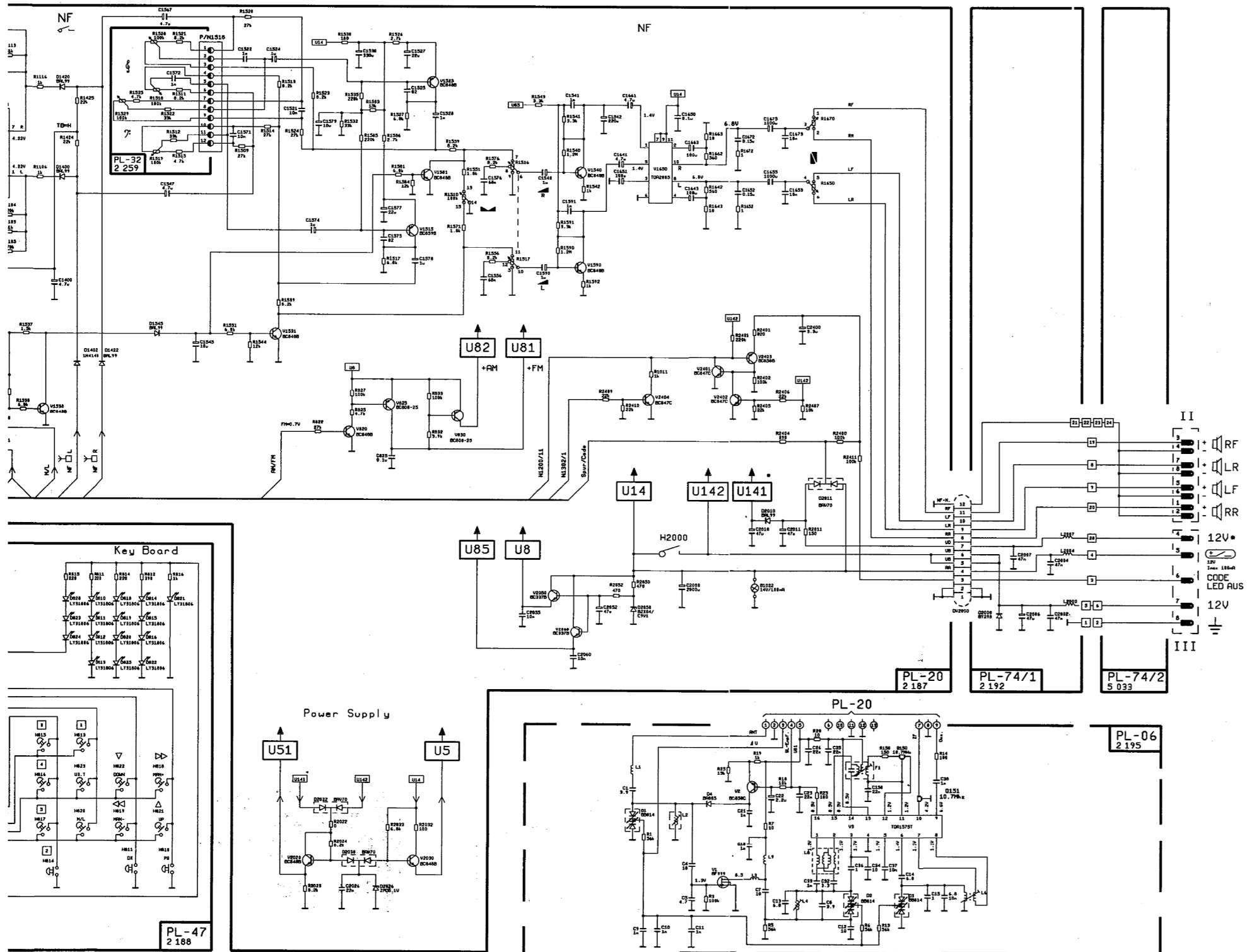




STEREO/ ASU

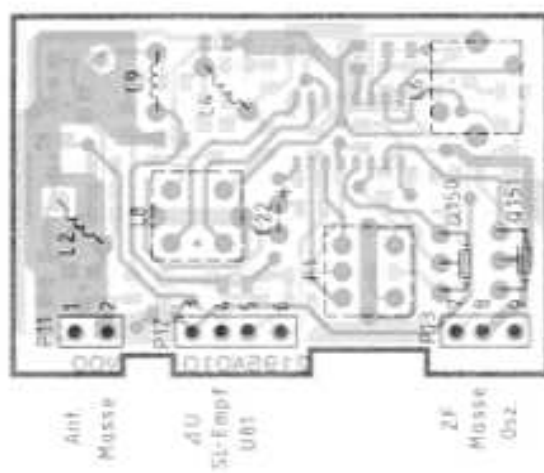




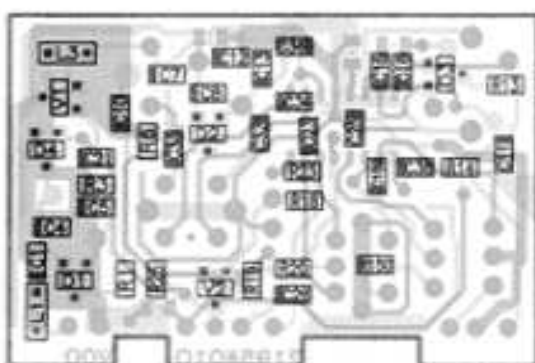


| | | | |
|--------------------------|-----------------------------|--------|--------------|
| OBJEKT: | NUR FÜR ANFRAGE UND VERSUCH | VERF.: | Verona-CR31 |
| ZEICHNUNG ODER ERSTELLT: | | VERF.: | VERONA POWER |
| 1: 1 | | VERF.: | VERONA POWER |
| 2: 1 | | VERF.: | VERONA POWER |
| 3: 1 | | VERF.: | VERONA POWER |
| 4: 1 | | VERF.: | VERONA POWER |
| 5: 1 | | VERF.: | VERONA POWER |
| 6: 1 | | VERF.: | VERONA POWER |
| 7: 1 | | VERF.: | VERONA POWER |
| 8: 1 | | VERF.: | VERONA POWER |
| 9: 1 | | VERF.: | VERONA POWER |
| 10: 1 | | VERF.: | VERONA POWER |
| 11: 1 | | VERF.: | VERONA POWER |
| 12: 1 | | VERF.: | VERONA POWER |
| 13: 1 | | VERF.: | VERONA POWER |
| 14: 1 | | VERF.: | VERONA POWER |
| 15: 1 | | VERF.: | VERONA POWER |
| 16: 1 | | VERF.: | VERONA POWER |
| 17: 1 | | VERF.: | VERONA POWER |
| 18: 1 | | VERF.: | VERONA POWER |
| 19: 1 | | VERF.: | VERONA POWER |
| 20: 1 | | VERF.: | VERONA POWER |
| 21: 1 | | VERF.: | VERONA POWER |
| 22: 1 | | VERF.: | VERONA POWER |
| 23: 1 | | VERF.: | VERONA POWER |
| 24: 1 | | VERF.: | VERONA POWER |
| 25: 1 | | VERF.: | VERONA POWER |
| 26: 1 | | VERF.: | VERONA POWER |
| 27: 1 | | VERF.: | VERONA POWER |
| 28: 1 | | VERF.: | VERONA POWER |
| 29: 1 | | VERF.: | VERONA POWER |
| 30: 1 | | VERF.: | VERONA POWER |
| 31: 1 | | VERF.: | VERONA POWER |
| 32: 1 | | VERF.: | VERONA POWER |
| 33: 1 | | VERF.: | VERONA POWER |
| 34: 1 | | VERF.: | VERONA POWER |
| 35: 1 | | VERF.: | VERONA POWER |
| 36: 1 | | VERF.: | VERONA POWER |
| 37: 1 | | VERF.: | VERONA POWER |
| 38: 1 | | VERF.: | VERONA POWER |
| 39: 1 | | VERF.: | VERONA POWER |
| 40: 1 | | VERF.: | VERONA POWER |
| 41: 1 | | VERF.: | VERONA POWER |
| 42: 1 | | VERF.: | VERONA POWER |
| 43: 1 | | VERF.: | VERONA POWER |
| 44: 1 | | VERF.: | VERONA POWER |
| 45: 1 | | VERF.: | VERONA POWER |
| 46: 1 | | VERF.: | VERONA POWER |
| 47: 1 | | VERF.: | VERONA POWER |
| 48: 1 | | VERF.: | VERONA POWER |
| 49: 1 | | VERF.: | VERONA POWER |
| 50: 1 | | VERF.: | VERONA POWER |
| 51: 1 | | VERF.: | VERONA POWER |
| 52: 1 | | VERF.: | VERONA POWER |
| 53: 1 | | VERF.: | VERONA POWER |
| 54: 1 | | VERF.: | VERONA POWER |
| 55: 1 | | VERF.: | VERONA POWER |
| 56: 1 | | VERF.: | VERONA POWER |
| 57: 1 | | VERF.: | VERONA POWER |
| 58: 1 | | VERF.: | VERONA POWER |
| 59: 1 | | VERF.: | VERONA POWER |
| 60: 1 | | VERF.: | VERONA POWER |
| 61: 1 | | VERF.: | VERONA POWER |
| 62: 1 | | VERF.: | VERONA POWER |
| 63: 1 | | VERF.: | VERONA POWER |
| 64: 1 | | VERF.: | VERONA POWER |
| 65: 1 | | VERF.: | VERONA POWER |
| 66: 1 | | VERF.: | VERONA POWER |
| 67: 1 | | VERF.: | VERONA POWER |
| 68: 1 | | VERF.: | VERONA POWER |
| 69: 1 | | VERF.: | VERONA POWER |
| 70: 1 | | VERF.: | VERONA POWER |
| 71: 1 | | VERF.: | VERONA POWER |
| 72: 1 | | VERF.: | VERONA POWER |
| 73: 1 | | VERF.: | VERONA POWER |
| 74: 1 | | VERF.: | VERONA POWER |
| 75: 1 | | VERF.: | VERONA POWER |
| 76: 1 | | VERF.: | VERONA POWER |
| 77: 1 | | VERF.: | VERONA POWER |
| 78: 1 | | VERF.: | VERONA POWER |
| 79: 1 | | VERF.: | VERONA POWER |
| 80: 1 | | VERF.: | VERONA POWER |
| 81: 1 | | VERF.: | VERONA POWER |
| 82: 1 | | VERF.: | VERONA POWER |
| 83: 1 | | VERF.: | VERONA POWER |
| 84: 1 | | VERF.: | VERONA POWER |
| 85: 1 | | VERF.: | VERONA POWER |
| 86: 1 | | VERF.: | VERONA POWER |
| 87: 1 | | VERF.: | VERONA POWER |
| 88: 1 | | VERF.: | VERONA POWER |
| 89: 1 | | VERF.: | VERONA POWER |
| 90: 1 | | VERF.: | VERONA POWER |
| 91: 1 | | VERF.: | VERONA POWER |
| 92: 1 | | VERF.: | VERONA POWER |
| 93: 1 | | VERF.: | VERONA POWER |
| 94: 1 | | VERF.: | VERONA POWER |
| 95: 1 | | VERF.: | VERONA POWER |
| 96: 1 | | VERF.: | VERONA POWER |
| 97: 1 | | VERF.: | VERONA POWER |
| 98: 1 | | VERF.: | VERONA POWER |
| 99: 1 | | VERF.: | VERONA POWER |
| 100: 1 | | VERF.: | VERONA POWER |

PL 06



PL 06 CHIP 



PL 06 CHIP 

